

Programmatic Approach And Systems Of Care:

Prenatal Diagnosis,
Treatment and Special
Delivery Unit at a
Children's Hospital

February 18, 2025

Susan S. Spinner, MSN, RN
Advanced Practice Nurse
Lori J. Howell Endowed Director
Richard D. Wood Jr. Center for Fetal
Diagnosis and Treatment



Children's Hospital
of Philadelphia

Richard D. Wood Jr.
Center for Fetal Diagnosis & Treatment

Hope. Heal. Learn.

CARDIOLOGY
2025 



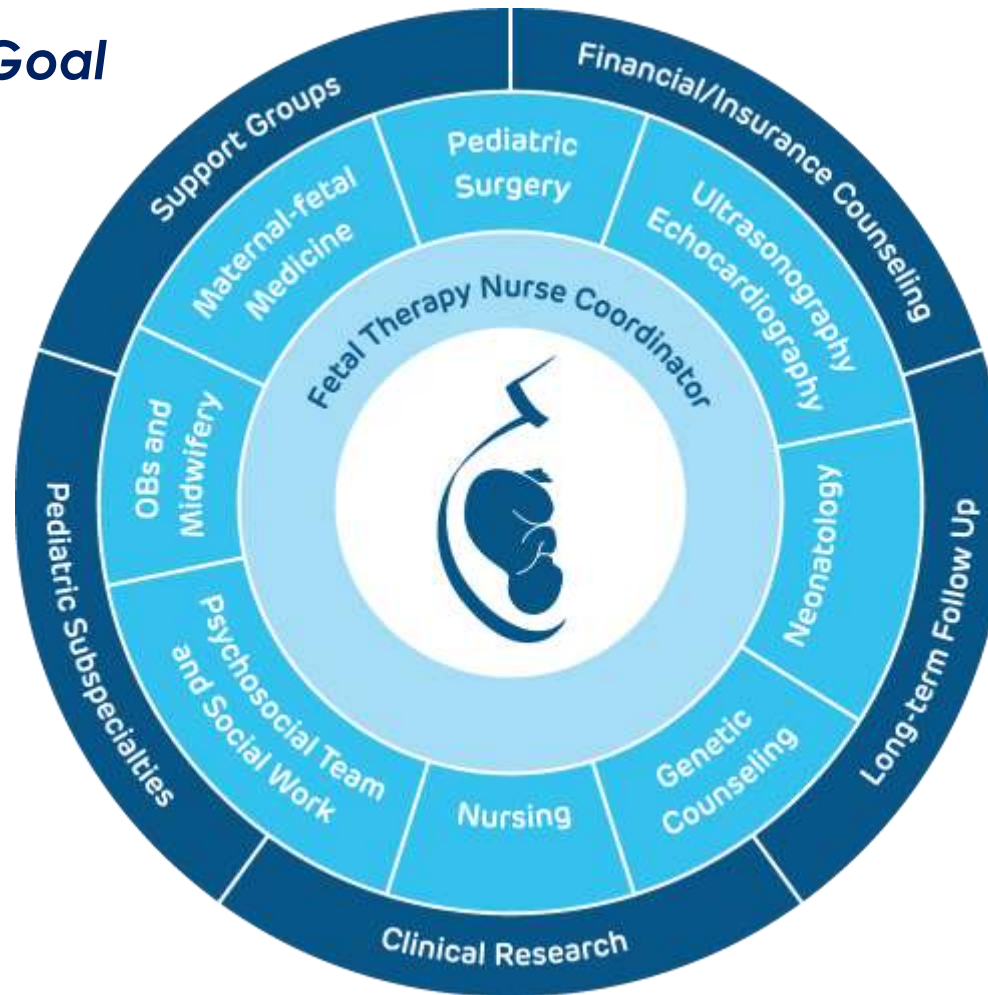
Our Work is Her Legacy: Honoring Lori Howell

Lori was a pioneer, and her legacy continues to shape our future.



Lori's Legacy

Many Disciplines, One Goal



“

We now know that the science is there, and the ability to support families on their journey is there; and as a nurse you get to be involved in both.

- Lori J. Howell

Howell, LJ, NS. *Establishing a Fetal Therapy Center: Lessons Learned*. 2003

Our Mission and Vision



Our vision is to be recognized as the premier center in the world, respected for maternal, fetal and neonatal care by discovering the causes and cures of birth defects and leading prevention, education and research.



- Equitable access to care
- Comprehensive diagnostic and obstetric services
- Prenatal care and delivery as typical as possible
- Multidisciplinary care from diagnosis to discharge
- Provide family centered care and support
- Gestation to Graduation



Seminars in Pediatric Surgery

Volume 22, Issue 1, February 2013, Pages 3-9

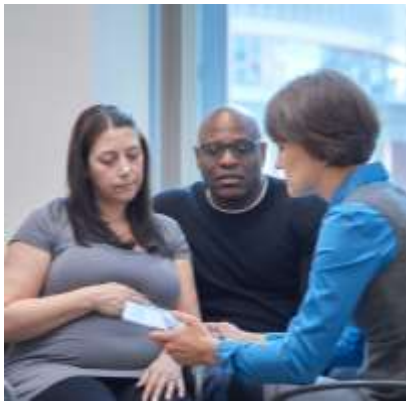
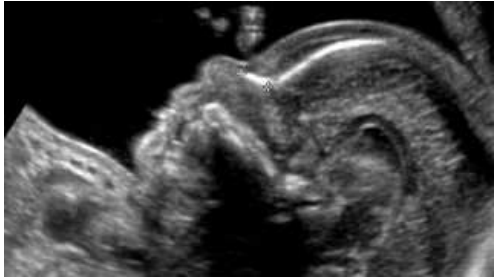


The Garbose Family Special Delivery Unit: A new paradigm for maternal-fetal and neonatal care

Lori J. Howell RN, MS, R



CFDT Patient Experience



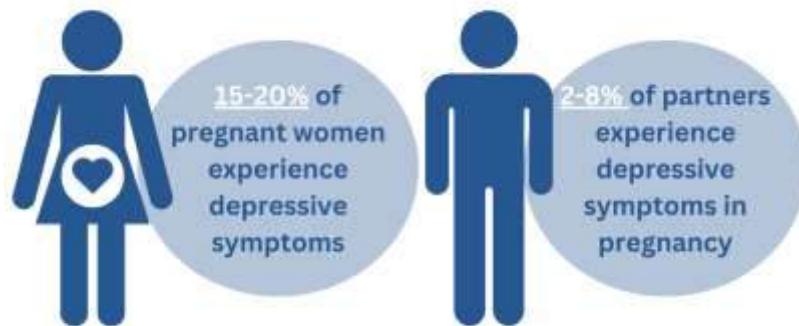
- First Phone Call
- Dedicated Fetal Therapy Coordinator
- On Day, One Location Evaluation
- Fetal Diagnosis is key
- Diagnosis Implications
- Treatment Options
- Psychosocial Team

Recognized by **Press Ganey** four years in **a row** (2021-2024) for excellence in patient experience



Home Away From Home: Embedded Psychosocial Services

- Relocation support
- Social work
- Psychology
- Chaplain
- Psychiatry
- Child Life
- Creative arts therapy



Fetal Firsts

- Access to care
- Nurse coordinators
- Fetal Force database
- Multidisciplinary meetings
 - Weekly image review
 - Monthly clinical leadership meeting
- Advanced Practice Nurses
 - Fetal APP Team
 - Nurse Midwife Team
- Genetic counseling team
- Housing resources
- Embedded psychosocial team including social work and child life
- Frontier Programs: CODA, CDH
- Fetal Family Reunion



Nursing Firsts



IFMSS 2017 Jackson Hole

JOGNN

REVIEW

Integrative Review of Nursing Practices in Fetal Therapy

Abigail Wilpers, Katie Francis, Susan S. Spinner, and Holly Powell Kennedy



IFMSS 2019 Sils, Switzerland

Fetal Care Nursing—The Birth of a Specialty

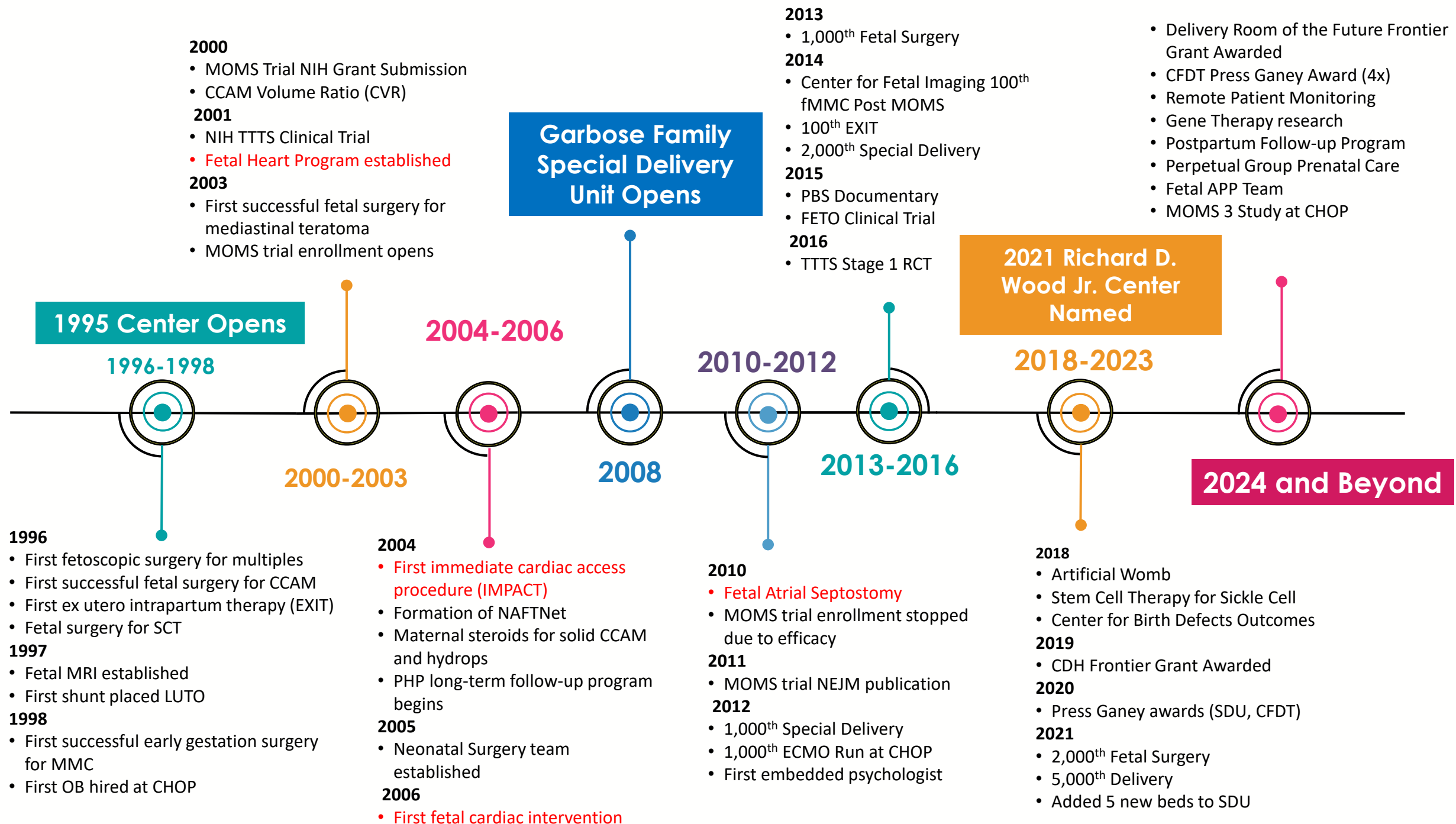
Katie Francis, Abigail Wilpers, Barbara Eichhorn, Kristine Rimbos, Nicole Pedersen & Kristen A. Gosnell

ABSTRACT: With the rapid growth of specialized fetal care centers (FCCs) across the United States, a new area of nursing practice has emerged. Fetal care nurses provide care in FCCs to pregnant persons experiencing complex fetal conditions. This article describes the unique practice of fetal care nurses necessitated by the complexity of perinatal care and the provision of maternal-fetal surgery in FCCs. The Fetal Therapy Nurse Network has played a significant role in the evolution of this nursing practice and will serve as a platform for the generation of core competencies and the development of a potential specialty certification for fetal care nurses.

doi: 10.1016/j.jogn.2023.04.006

Accepted April 23, 2023; published online June 1, 2023

KEYWORDS: care coordination, fetal care center, fetal care nurse, fetal surgery, fetal therapy, fetal therapy centers, maternal-fetal care nurse, maternal-fetal intervention, nursing practice, scope of practice



CFDT by the Numbers

- > **33,500** patients referred since 1995
From 70 countries and 50 states
- > **2,400** fetal surgeries
- > **6,800** deliveries in the Garbose Family
Special Delivery Unit since June 2008



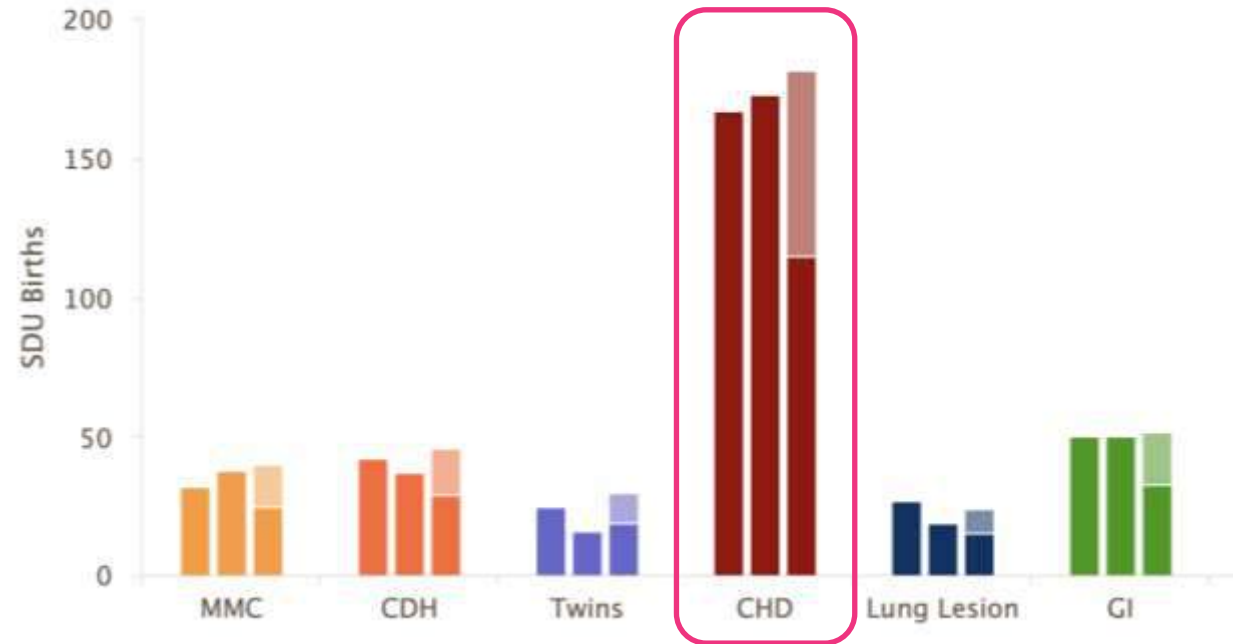
Fetal Heart Volumes

Cardiac is the largest patient population seen in the CFDT and delivered in the SDU

28% of all onsite evaluations over the last three years were cardiac

Cardiac births also account for the highest SDU delivery rates

SDU Births by Diagnosis

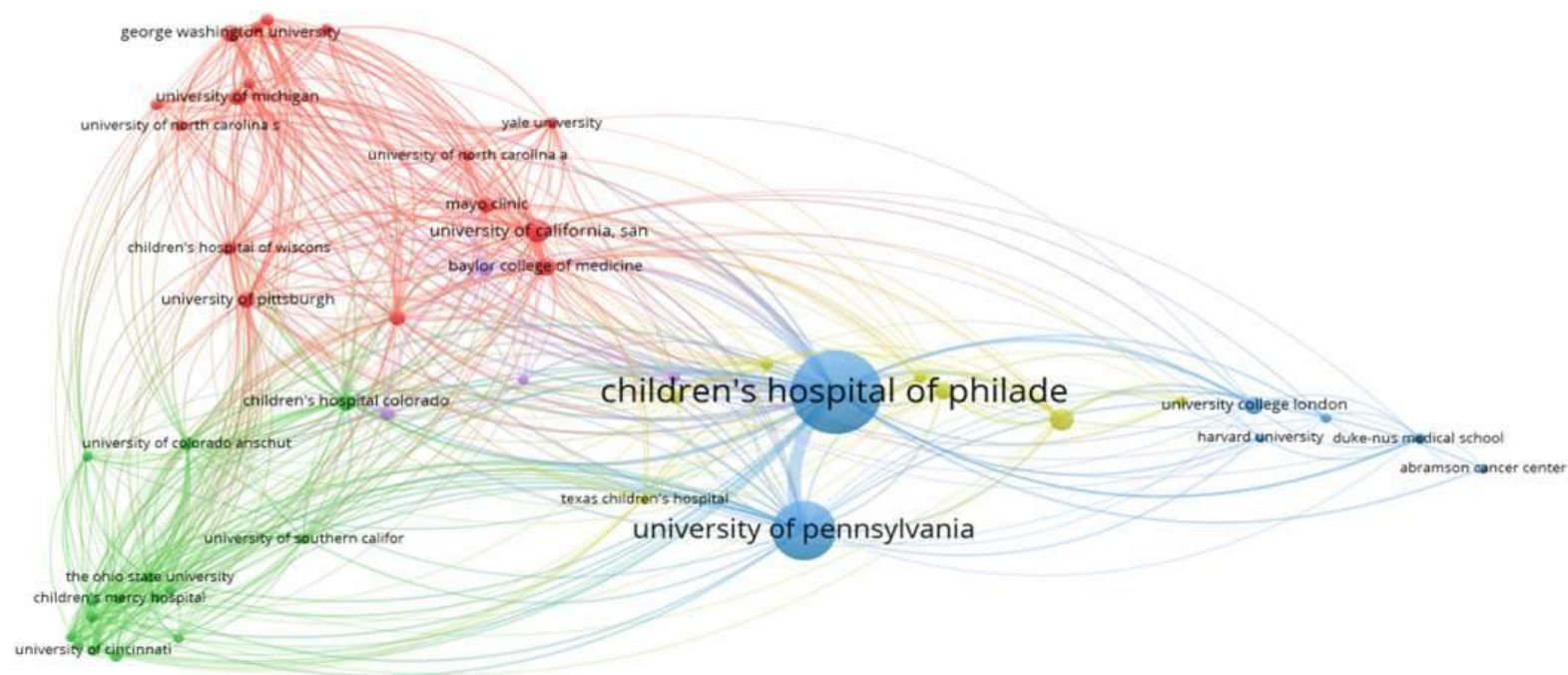


Delivery Units in Free Standing Children's Hospitals

Institution	Location	Year established	Deliveries first year	Deliveries 2021	Current rooms
Children's Hospital of Philadelphia	Philadelphia, PA	2008	200	505	15
Children's Mercy Kansas City	Kansas City, MO	2010	90	212	9
Colorado Children's	Aurora, CO	2012	17	275	12
Cleveland Clinic	Cleveland, OH	2012	91	150	3
Cincinnati Children's	Cincinnati, OH	2019	90	157	7
Dell Children's Medical Center	Austin, TX	2020	75	75	9

Moise et al; Am J Perinatol 2023 Jul 10; doi:10.1055/a-2107-1923.

Institutional collaborations since 2019 - Present



Total Research
Organizations: 253

Clusters: 5

Total Organization
Links: 583

Total Co-Author
Citations: 2033



Visionary Leadership at CHOP



**Lynn and William
Garbose**

**Lori Howell, DNP,
MSN, RN**



**N. Scott Adzick, MD, MMM
Surgeon in Chief,
Founder and Director, CFDT**



**Jack Rychik, MD
Director, Fetal Heart Program**

Teamwork





The Children's Hospital of Philadelphia
The 1st Annual Fetal Surgery Reunion
May 4th, 1997



28th Fetal Family Reunion

